

## Refrigeration Equipment 1-Glass Door ADA Height Under Counter Refrigerator 24" Long

ITEM # \_\_\_\_\_

MODEL # \_\_\_\_\_

NAME # \_\_\_\_\_

SIS # \_\_\_\_\_

AIA # \_\_\_\_\_



738325 (KCHUCGD23R)

1-Glass Door ADA Height Under Counter Refrigerator 24" Long

### Short Form Specification

**Item No.** \_\_\_\_\_

1-glass door ADA compliant undercounter refrigerator with exterior back panel and exterior bottom panel in galvanized steel, exterior side and top panel in 430 stainless steel; interior back, top and bottom panels in high impact white polystyrene. Fin & tube condenser to improve the performances in high temperature environments. Automatic Defrost Cooling System and temperature control. Vinyl heavy duty adjustable, easy to handle and clean shelves. External temperature display.

R600a gas in refrigeration circuit.  
ETL Safety and Sanitation certified.  
3/5 Years warranty.

### Main Features

- ADA Height Compliant
- External temperature display.
- Bright LED illumination, enhancing product visibility for impactful merchandising
- Removable gasket for easy cleaning operations.
- Fin & Tube Condenser improves performance in high temperature environments.
- Automatic Defrost Cooling System provides worry-free performance.
- Electronic Temperature Control, quick and simple to set, with control display for easy monitoring.
- Heavy duty Vinyl coated steel shelves.
- Cabinet completely insulated with high density polyurethane for low environmental impact.
- Adjustable shelves for flexible storage
- On/off switch controls interior LED lights
- Back bottom mounted cooling unit guarantee an easy access and cleaning.
- Removable rubber bumper guards for airflow spacing and shock absorption

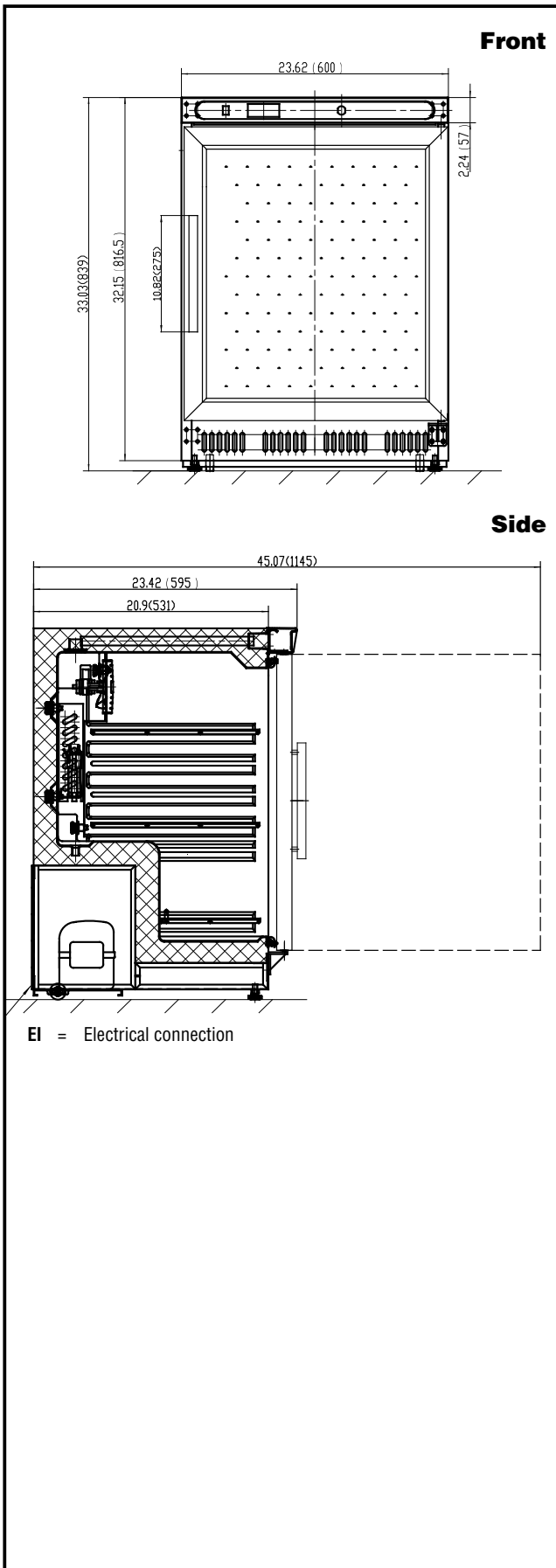
### Construction

- Stainless steel body.
- Lockable door.
- White polystyrene interior, for high impact resistance
- Pre-wired heavy duty power cord.
- Heavy duty door hinges.
- Adjustable leveling feet.
- Smooth rolling wheels, for effortless mobility
- Stainless steel worktop, durable functionality
- Magnetic gasket removable without tools for easy cleaning.

### Sustainability

- CFC and HCFC free (ecological refrigerant type: R600a).
- High efficiency components to minimize the energy consumption still guaranteeing the highest performances.
- 60 mm insulation for energy saving.

APPROVAL: \_\_\_\_\_



## Electric

Supply voltage:	115 V/1 ph/60 Hz
Electrical power, max:	0.24 kW
Plug type:	NEMA 5-15

## Capacity:

Gross capacity:	4.4 cu.feet
-----------------	-------------

## Key Information:

Number and type of grids (included):	3 - Vinyl-Coated steel
Warranty:	3 / 5 years
Door hinges:	Right Side
External dimensions, Width:	23 5/8" (600 mm)
External dimensions, Depth:	23 7/16" (595 mm)
External dimensions, Height:	33 1/32" (839 mm)
Internal Dimensions (depth):	15 15/16" / (405 mm)
Internal Dimensions (height):	24 5/8" / (625 mm)
Internal Dimensions (width):	19 5/16" / (491 mm)
Shipping height:	41 5/16" (1050 mm)
Shipping weight:	115 lbs (52 kg)
Shipping volume:	16.39 ft <sup>3</sup> (0.46 m <sup>3</sup> )
Type of external material:	Stainless Steel
Type of internal material:	High Impact White Polystyrene
Approvals	ETL C&US;ETL SANITATION

## Refrigeration Data

Condenser type:	Fin & tube
Operating temperature min.:	32 °F
Compressor power:	1/12 hp
Operating temperature max.:	41 °F
Defrost type:	Automatic

## Sustainability

Current consumption:	2 Amps
Refrigerant type:	R600a
Refrigerant weight:	64 g

